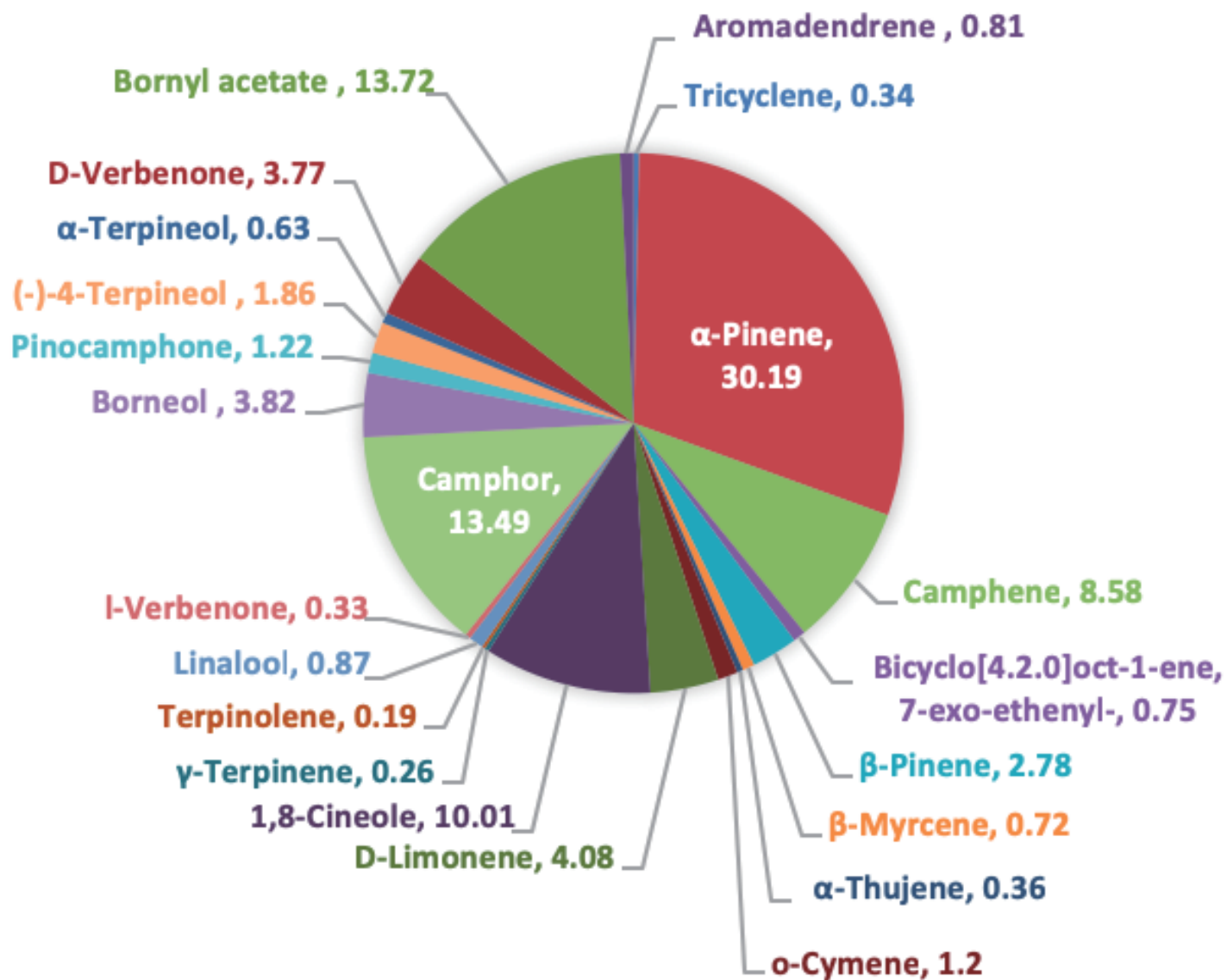
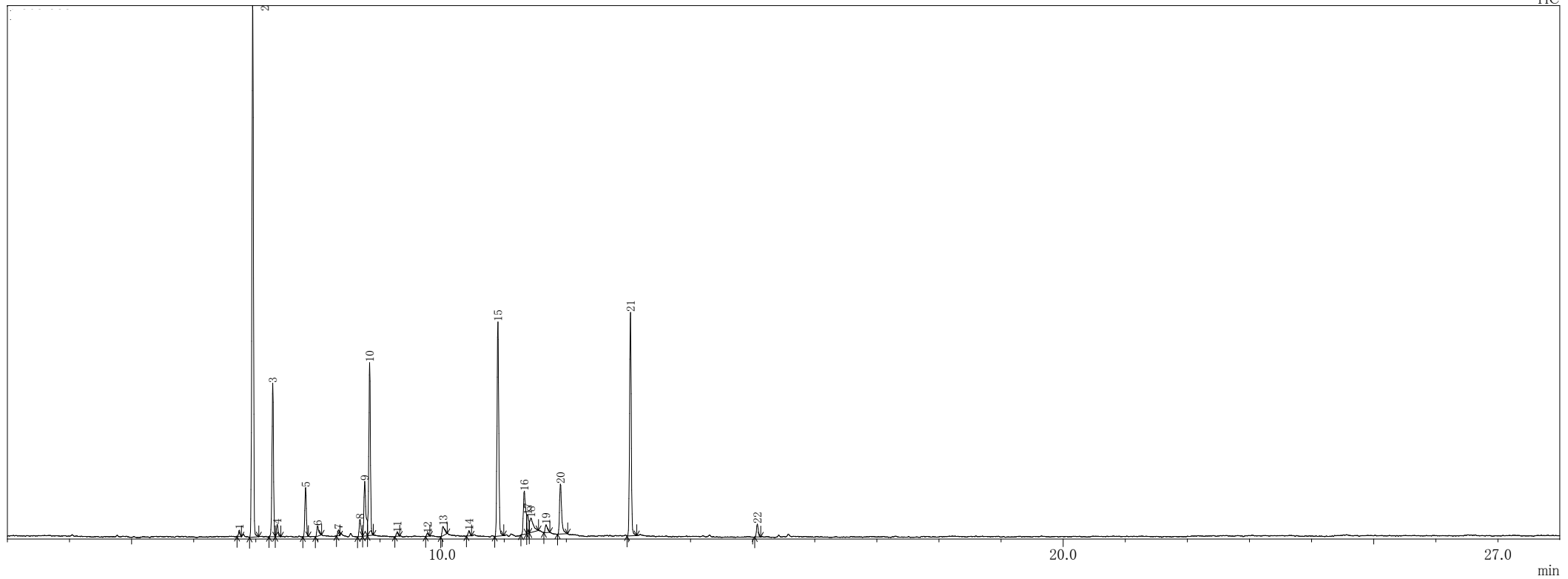


ROSEMARY VERBENONE



Rosemary Verbenone

TIC



ピークテーブル TIC

ピーク#	保持時間	面積	面積%	高さ	高さ%	A/H	化合物
1	6.735	37274	0.34	22970	0.40	1.62	Tricyclo[2.2.1.0(2,6)]heptane, 1,7,7-trimethyl-
2	6.952	3311791	30.19	1902706	32.82	1.74	.alpha.-Pinene
3	7.274	940805	8.58	549994	9.49	1.71	Camphene
4	7.346	82792	0.75	44410	0.77	1.86	Bicyclo[3.1.0]hex-2-ene, 4-methylene-1-(1-methylethyl)-
5	7.803	304466	2.78	175973	3.04	1.73	.beta.-Pinene
6	7.996	79008	0.72	36513	0.63	2.16	.beta.-Myrcene
7	8.334	39650	0.36	21199	0.37	1.87	Bicyclo[3.1.0]hex-2-ene, 2-methyl-5-(1-methylethyl)-
8	8.679	132110	1.20	62108	1.07	2.13	Benzene, 1-methyl-2-(1-methylethyl)-
9	8.755	447358	4.08	195913	3.38	2.28	Cyclohexene, 1-methyl-4-(1-methylethenyl)-, (S)-
10	8.834	1098357	10.01	618555	10.67	1.78	Eucalyptol
11	9.277	28426	0.26	13721	0.24	2.07	Cyclopentene, 3-isopropenyl-5,5-dimethyl-
12	9.766	21293	0.19	10888	0.19	1.96	Cyclohexene, 1-methyl-4-(1-methylethylidene)-
13	10.016	95292	0.87	32939	0.57	2.89	1,6-Octadien-3-ol, 3,7-dimethyl-
14	10.434	36197	0.33	18264	0.32	1.98	3,5-Heptadien-2-ol, 2,6-dimethyl-
15	10.900	1480163	13.49	767195	13.23	1.93	Bicyclo[2.2.1]heptan-2-one, 1,7,7-trimethyl-, (+/-)-
16	11.324	419156	3.82	154393	2.66	2.71	endo-Borneol
17	11.380	133425	1.22	65042	1.12	2.05	Bicyclo[3.1.1]heptan-3-one, 2,6,6-trimethyl-
18	11.431	204523	1.86	51500	0.89	3.97	3-Cyclohexen-1-ol, 4-methyl-1-(1-methylethyl)-, (R)-
19	11.674	69113	0.63	27966	0.48	2.47	3-Cyclohexene-1-methanol, .alpha.,.alpha.,4-trimethyl-, (S)-
20	11.906	413348	3.77	179041	3.09	2.31	D-Verbenone
21	13.033	1505026	13.72	800230	13.80	1.88	Bornyl acetate
22	15.077	89027	0.81	45616	0.79	1.95	Bicyclo[7.2.0]undec-4-ene, 4,11,11-trimethyl-8-methylene-, [1R-(1R*,4Z,9S*)]-
		10968600	100.00	5797136	100.00		

※1 設備提供：株式会社 久留米リサーチ・パーク

※2 使用機器：島津製作所製 GC-MS：QP2010 Plus

※3 分析条件：サンプルは有機溶媒で500倍に希釈後、直接導入法にて分析。

サンプル前処理…アセトンで500倍希釈、カラム…DB-5ms、

昇温条件…40℃(2min)-10℃/min-240℃(5min)、NISTライブラリにて同定。