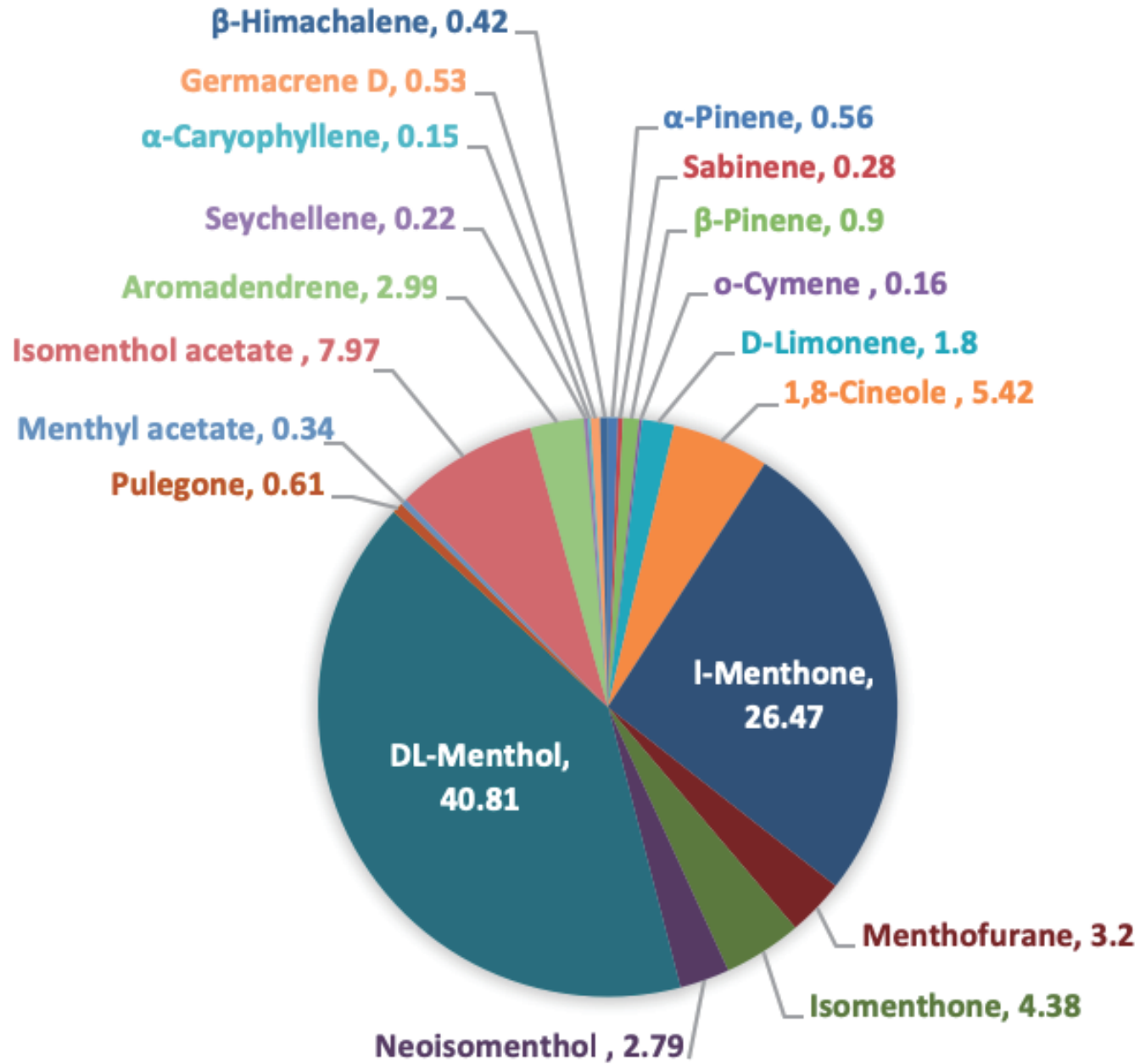
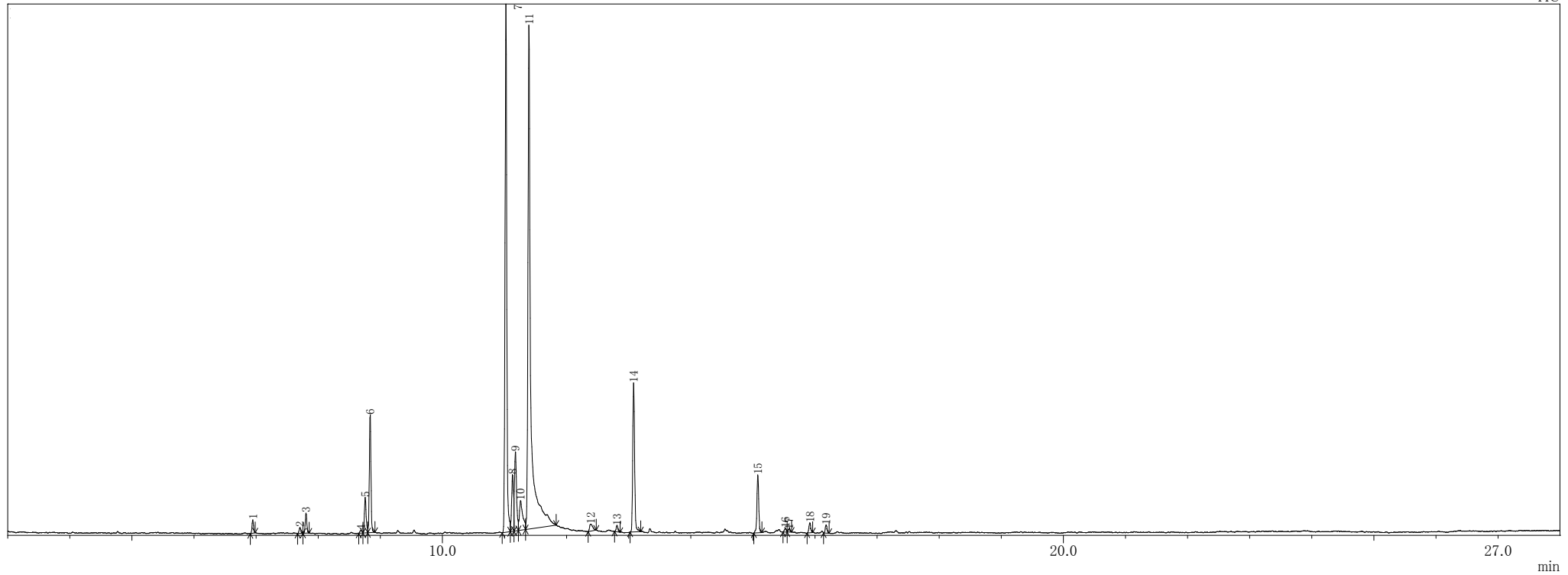


PEPPERMINT



Peppermint

TIC



ピークテーブル TIC

ピーク#	保持時間	面積	面積%	高さ	高さ%	A/H	化合物
1	6.948	74095	0.56	44923	0.82	1.65	.alpha.-Pinene
2	7.707	36400	0.28	19838	0.36	1.83	Bicyclo[3.1.0]hexane, 4-methylene-1-(1-methylethyl)-
3	7.805	118456	0.90	66874	1.22	1.77	.beta.-Pinene
4	8.689	20460	0.16	9006	0.16	2.27	Benzene, 1-methyl-2-(1-methylethyl)-
5	8.758	237242	1.80	118285	2.17	2.01	D-Limonene
6	8.838	712810	5.42	392622	7.19	1.82	Eucalyptol
7	11.025	3481310	26.47	1760403	32.24	1.98	Cyclohexanone, 5-methyl-2-(1-methylethyl)-, trans-
8	11.132	420721	3.20	188799	3.46	2.23	Benzofuran, 4,5,6,7-tetrahydro-3,6-dimethyl-
9	11.177	576233	4.38	263926	4.83	2.18	Cyclohexanone, 5-methyl-2-(1-methylethyl)-, cis-
10	11.261	367222	2.79	98669	1.81	3.72	Cyclohexanol, 1-methyl-4-(1-methylethyl)-
11	11.396	5366697	40.81	1679445	30.76	3.20	Cyclohexanol, 5-methyl-2-(1-methylethyl)-, [1S-(1.alpha.,2.beta.,5.alpha.)]-
12	12.390	80863	0.61	22976	0.42	3.52	Cyclohexanone, 5-methyl-2-(1-methylethylidene)-
13	12.813	44094	0.34	21434	0.39	2.06	Cyclohexanol, 5-methyl-2-(1-methylethyl)-, acetate, (1.alpha.,2.beta.,5.beta.)-
14	13.081	1047572	7.97	496931	9.10	2.11	Menthyl acetate
15	15.081	393029	2.99	193429	3.54	2.03	Bicyclo[7.2.0]undec-4-ene, 4,11,11-trimethyl-8-methylene-, [1R-(1R*,4Z,9S*)]-
16	15.525	28693	0.22	12387	0.23	2.32	Sevchellene
17	15.579	19428	0.15	9431	0.17	2.06	.alpha.-Caryophyllene
18	15.919	70294	0.53	33428	0.61	2.10	1,6-Cyclodecadiene, 1-methyl-5-methylene-8-(1-methylethyl)-, [s-(E,E)]-
19	16.181	54996	0.42	27728	0.51	1.98	1H-Benzocycloheptene, 2,4a,5,6,7,8-hexahydro-3,5,5,9-tetramethyl-, (R)-
		13150615	100.00	5460534	100.00		

※1 設備提供：株式会社 久留米リサーチ・パーク

※2 使用機器：島津製作所製 GC-MS：QP2010 Plus

※3 分析条件：サンプルは有機溶媒で500倍に希釈後、直接導入法にて分析。

サンプル前処理…アセトンで500倍希釈、カラム…DB-5ms、

昇温条件…40°C(2min)-10°C/min-240°C(5min)、NISTライブラリにて同定。